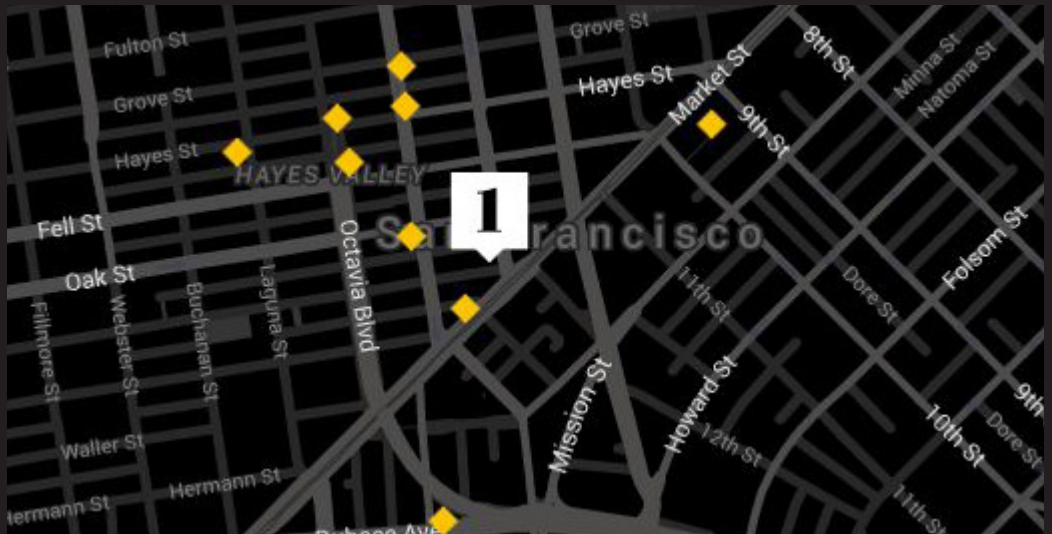


10 PAGE
COMMERCIAL CONDO
FOR SALE
OFFERED AT **\$519,000**

722 INTERIOR SF

AT THE CROSSROADS OF
HAYES VALLEY AND
MID MARKET

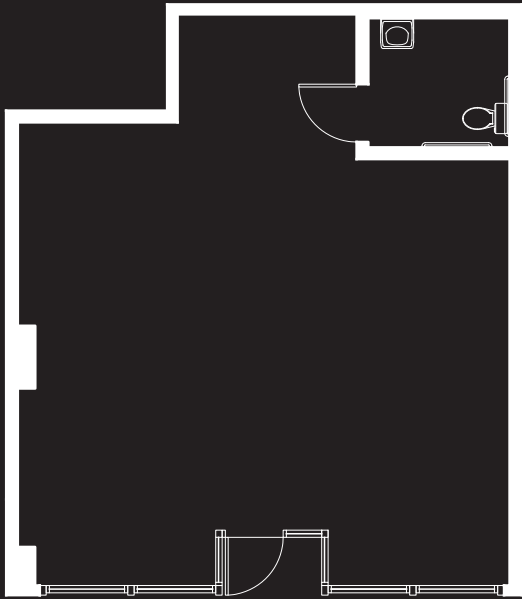
\$180 Monthly HOA Fees



Own a quintessential piece of San Francisco on the edge of Hayes Valley and Mid- Market. As the surrounding neighborhood turned into a weekend haven for discerning shoppers and foodies, a swank and stylish community has grown right alongside it. The residents of this area are known for the strong support of its local retailers and restaurants, making this location highly desirable.



URBANGROUP
real estate



DESIGN

Modern design in the heart of a creative commercial environment
Light filled space with high ceilings

DELIVERY CONDITION

Warm Shell
200 Amps 3 phase electric service
One ADA Restroom roughed in

LOCATION

Located at the crossroad of Hayes Valley and Mid-Market
Nearby businesses include Zuni Cafe, Rich Table, Monsieur Benjamin, Cala, Warby Parker, Souvla, Rand + Statler, SF Jazz Center, SF Symphony, SF Opera House, Brass Tracks, Propeller, Fatted Calf, and Petit Crenn

PAGE STREET

90% SBA 504 Financing Example

Down Payment \$51,900 10%

SBA Loan Information

			Interest	Amortization	Monthly
Bank Loan	\$259,500	50%	4.75%	25 Yrs	\$1,479.45
SBA	\$207,600	40%	4.82%	20 Yrs	\$1,349.51
				Total Loan:	\$2,828.96
				Annual	Monthly
RE Taxes (estimated at 1.1829% of Purchase Price)				\$6,139.25	\$511.60
HOA				\$2,160.00	\$180.00
				Total Monthly	\$3,520.57
				Monthly \$ PSF	\$4.88

LOUIS CORNEJO | 415.863.1775

LOUIS@URBANGROUPSF.COM

BRE: 01518102



URBANGROUP
real estate

2601 MISSION STREET, STE 502,
SAN FRANCISCO, CA 94110
URBANGROUPSF.COM | BRE: 01885834

The information contained herein has been secured from sources believed to be reliable. It is not guaranteed, however, and should be verified prior to consummating any transaction.